

R500

SERIES

Heavy Duty
Forged Steel

Load Capacity: 540 to 3,400 lbs.

Quality Features

- INTEGRALLY FORGED KING PIN.**
 King pin is integrally forged with upper raceway using SAE-1050 quality grade steel. Used with a slotted nut to allow for proper bearing adjustment whenever necessary. Designed to be virtually indestructible!
- HOT FORGED STEEL CONSTRUCTION.**
 Top plate, yoke base and bearing retainer are hot forged using SAE-1050 hardening quality steel. Raceways are precision machined for 3/8" hardened chrome steel load bearings and tapered thrust bearing.
- EMBOSSSED AND WELDED FORK LEGS.**
 Extra-wide side forks made of 3/8" thick steel plate are heavily embossed and continuously welded for added strength.
- ASSORTED WHEEL SIZES AND DIMENSIONS.**
 Large selection of wheel types and sizes, plus multiple overall heights, provides the most choices based on load capacity and floor conditions.
- LOCKED WHEEL AXLE.**
 Wheel axle is locked in position with indexing lance in side fork to prevent unwanted movement.

SWIVEL

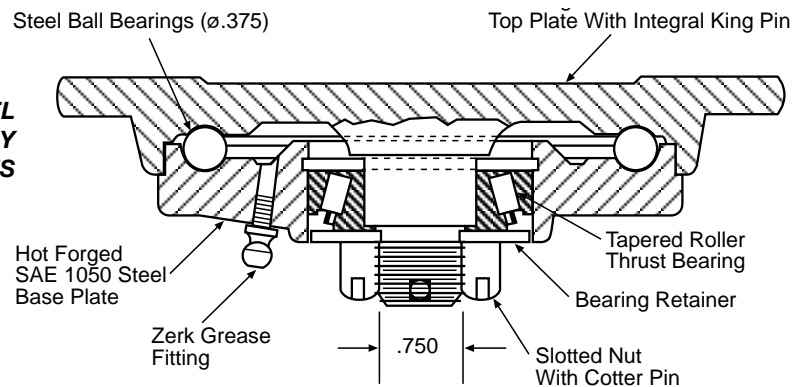


R500

RIGID

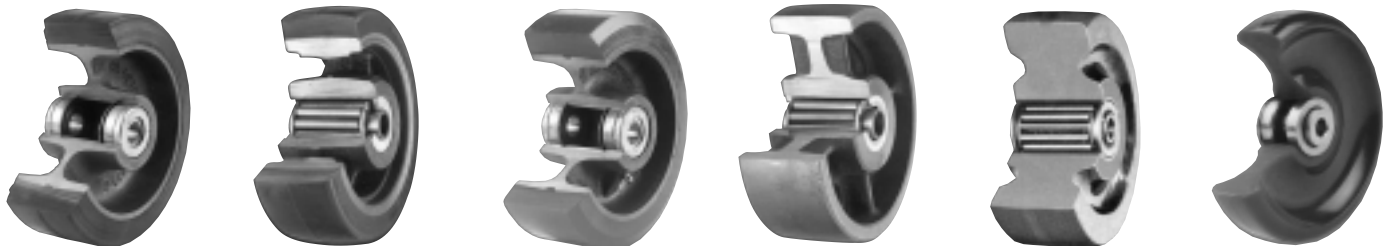


SWIVEL
BEARING RACEWAY
R500 SERIES

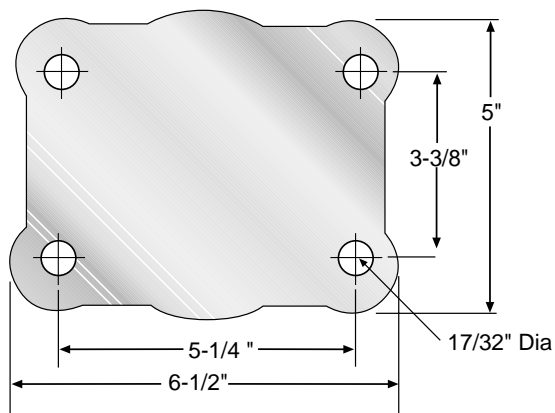


Wheel Selection

CAST IRON HUB	CAST IRON HUB	CAST IRON HUB	CAST IRON	PHENOLIC	ADVANCED ELASTOMER
MOLD-ON RUBBER	MOLD-ON POLYURETHANE	MOLD-ON SOFT POLY			

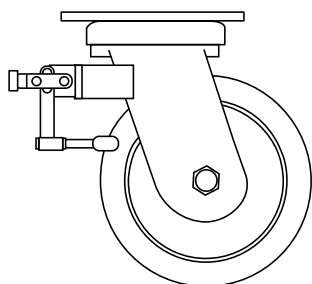


TOP PLATE

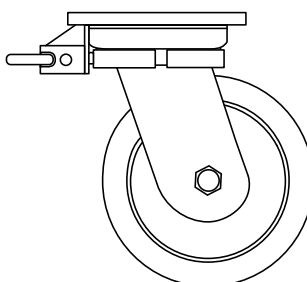


BRAKES

Universal Wheel Brake



Medium Duty Swivel Lock



The strongest, most positive foot-operated brake available. Once locked, this brake cannot be forced open under any amount of abuse until the foot bar is raised to the unlocked position. Works equally well on hard tread or soft tread wheels. Is fully adjustable to compensate for wheel wear, and is even effective on wheels with thread guards or tapered roller bearings. All parts, according to their mechanical functions, stresses, strains and wear are heat treated for longer life.

This husky, plunger-type swivel lock, with steel body can be welded to any of the medium-duty casters.

Diameter	Tread Width	Load Capacity	Wheel Material	Bearing	Swivel Part Number	Rigid Part Number	Approx. Weight	Overall Height	Swivel Radius	
5	2½	1800	CAST IRON	ROLLER	SC-500-5-CI	RC-500-5-CI	18-7/10	7	5-1/8	
6	2½	540	MOLD-ON RUBBER	ROLLER	SC-501-6-RS	RC-501-6-RS	17-1/5	7-1/2	5-5/8	
					SC-502-6-RS	RC-502-6-RS	17-2/5	7-3/4	5-1/2	
					SC-503-6-RS	RC-503-6-RS	17-3/5	8	4-15/16	
		960	SOFT POLY / CAST IRON HUB		SC-501-6-PS8	RC-501-6-PS8	19-3/10	7-1/2	5-5/8	
					SC-502-6-PS8	RC-502-6-PS8	19-1/2	7-3/4	5-1/2	
					SC-503-6-PS8	RC-503-6-PS8	19-7/10	8	4-15/16	
		1600	ADVANCED ELASTOMER		PRECISION BALL	SC-501-6-TAE	RC-501-6-TAE	19-3/10	7-1/2	5-5/8
						SC-502-6-TAE	RC-502-6-TAE	19-1/2	7-3/4	5-1/2
						SC-503-6-TAE	RC-503-6-TAE	19-7/10	8	4-15/16
				ROLLER	SC-501-6-PXAE	RC-501-6-PXAE	19-3/10	7-1/2	5-5/8	
					RC-502-6-PXAE	RC-502-6-PXAE	19-1/2	7-3/4	5-1/2	
					RC-503-6-PXAE	RC-503-6-PXAE	19-7/10	8	4-15/16	
		3000	CAST IRON	ROLLER	SC-501-6-PR	RC-501-6-PR	13-4/5	7-1/2	5-5/8	
					SC-502-6-PR	RC-502-6-PR	14	7-3/4	5-1/2	
					SC-503-6-PR	RC-503-6-PR	14-1/5	8	4-15/16	
				ROLLER	SC-501-6-PS	RC-501-6-PS	19-3/10	7-1/2	5-5/8	
					SC-502-6-PS	RC-502-6-PS	19-1/2	7-3/4	5-1/2	
					SC-503-6-PS	RC-503-6-PS	19-7/10	8	4-15/16	
		ROLLER	SC-501-6-CI	RC-501-6-CI	21-1/10	7-1/2	5-5/8			
SC-502-6-CI	RC-502-6-CI		21-3/10	7-3/4	5-1/2					
SC-503-6-CI	RC-503-6-CI		21-1/2	8	4-15/16					

R500

SERIES

continued



R550

Diameter	Tread Width	Load Capacity	Wheel Material	Bearing	Swivel Part Number	Rigid Part Number	Approx. Weight	Overall Height	Swivel Radius		
6	3	680	MOLD-ON RUBBER	ROLLER	SC-551-6-RS	RC-551-6-RS	20-4/5	7-1/2	5-5/8		
					SC-552-6-RS	RC-552-6-RS	20-9/10	7-3/4	5-1/2		
			SC-553-6-RS		RC-553-6-RS	21-1/10	8	5-5/8			
			SC-551-6-PSS		RC-551-6-PSS	22-9/10	7-1/2	5-1/2			
			SC-552-6-PSS		RC-552-6-PSS	23	7-3/4	5-1/2			
			SC-553-6-PSS		RC-553-6-PSS	23-1/5	8	5-5/8			
		1080	SOFT POLY / CAST IRON HUB		2000	PHENOLIC	SC-551-6-PR	RC-551-6-PR	14-4/5	7-1/2	5-5/8
							SC-552-6-PR	RC-552-6-PR	14-9/10	7-3/4	5-1/2
			SC-553-6-PR			RC-553-6-PR	15-1/10	8	5-5/8		
			SC-551-6-PS			RC-551-6-PS	22-9/10	7-1/2	5-1/2		
			SC-552-6-PS			RC-552-6-PS	23	7-3/4	5-1/2		
			SC-553-6-PS			RC-553-6-PS	23-1/5	8	5-5/8		
3100	CAST IRON	3100	CAST IRON	SC-551-6-CI	RC-551-6-CI	24-3/5	7-1/2	5-5/8			
				SC-552-6-CI	RC-552-6-CI	24-7/10	7-3/4	5-1/2			
	SC-553-6-CI		RC-553-6-CI	24-9/10	8	5-1/2					
	SC-504-8-RS		RC-504-8-RS	23-1/5	10-1/8	6-1/2					
	SC-505-8-RS		RC-505-8-RS	23-2/5	10-1/4						
	SC-506-8-RS		RC-506-8-RS	23-7/10	10-1/2						
SC-504-8-PS8	RC-504-8-PS8	24-4/5	10-1/8								
SC-505-8-PS8	RC-505-8-PS8	25	10-1/4								
SC-506-8-PS8	RC-506-8-PS8	25-3/10	10-1/2								
SC-504-8-TAE	RC-504-8-TAE	24-4/5	10-1/8								
SC-505-8-TAE	RC-505-8-TAE	25	10-1/4								
SC-506-8-TAE	RC-506-8-TAE	25-3/10	10-1/2								
SC-504-8-PXAE	RC-504-8-PXAE	24-4/5	10-1/8								
SC-505-8-PXAE	RC-505-8-PXAE	25	10-1/4								
SC-506-8-PXAE	RC-506-8-PXAE	25-3/10	10-1/2								
SC-504-8-PR	RC-504-8-PR	17	10-1/8								
SC-505-8-PR	RC-505-8-PR	17-1/5	10-1/4								
SC-506-8-PR	RC-506-8-PR	17-1/2	10-1/2								
SC-504-8-PS	RC-504-8-PS	24-4/5	10-1/8								
SC-505-8-PS	RC-505-8-PS	25	10-1/4								
SC-506-8-PS	RC-506-8-PS	25-3/10	10-1/2								
SC-504-8-CI	RC-504-8-CI	28-7/10	10-1/8								
SC-505-8-CI	RC-505-8-CI	29	10-1/4								
SC-506-8-CI	RC-506-8-CI	29-3/10	10-1/2								



R550

Series R500 continued

Diameter	Tread Width	Load Capacity	Wheel Material	Bearing	Swivel Part Number	Rigid Part Number	Approx. Weight	Overall Height	Swivel Radius				
		 LBS					 LBS						
8	3	840	MOLD-ON RUBBER	ROLLER	SC-554-8-RS	RC-554-8-RS	23-7/10	10-1/8	6-1/2				
					SC-555-8-RS	RC-555-8-RS	23-9/10	10-1/4					
					SC-556-8-RS	RC-556-8-RS	24-1/5	10-1/2					
					SC-554-8-PS8	RC-554-8-PS8	25-3/10	10-1/8					
					SC-555-8-PS8	RC-555-8-PS8	25-1/2	10-1/4					
					SC-556-8-PS8	RC-556-8-PS8	25-4/5	10-1/2					
		2050	SOFT POLY / CAST IRON HUB		SC-554-8-PR	RC-554-8-PR	17-1/2	10-1/8					
					SC-555-8-PR	RC-555-8-PR	17-7/10	10-1/4					
					SC-556-8-PR	RC-556-8-PR	18	10-1/2					
					SC-554-8-PS	RC-554-8-PS	25-3/10	10-1/8					
					SC-555-8-PS	RC-555-8-PS	25-1/2	10-1/4					
					SC-556-8-PS	RC-556-8-PS	25-4/5	10-1/2					
2500	PHENOLIC	SC-554-8-CI	RC-554-8-CI	29-3/10	10-1/8								
		SC-555-8-CI	RC-555-8-CI	29-1/2	10-1/4								
		SC-556-8-CI	RC-556-8-CI	29-4/5	10-1/2								
		10	2 1/2	790	MOLD-ON RUBBER	ROLLER	SC-507-10-RS	RC-507-10-RS	33-3/10	11-1/2	7-1/2		
							SC-508-10-RS	RC-508-10-RS	33-4/5	12-1/4			
							SC-509-10-RS	RC-509-10-RS	34	12-1/2			
SC-507-10-TAE	RC-507-10-TAE						35-4/5	11-1/2					
SC-508-10-TAE	RC-508-10-TAE						36-3/10	12-1/4					
SC-509-10-TAE	RC-509-10-TAE						36-1/2	12-1/2					
2000	ADVANCED ELASTOMER			PRECISION BALL	SC-507-10-PXAE		RC-507-10-PXAE	35-4/5	11-1/2				
					SC-508-10-PXAE		RC-508-10-PXAE	36-3/10	12-1/4				
					SC-509-10-PXAE		RC-509-10-PXAE	36-1/2	12-1/2				
					2160		SOFT POLY / CAST IRON HUB	ROLLER	SC-507-10-PS	RC-507-10-PS		35-4/5	11-1/2
									SC-508-10-PS	RC-508-10-PS		36-3/10	12-1/4
									SC-509-10-PS	RC-509-10-PS		36-1/2	12-1/2
SC-507-10-PS8	RC-507-10-PS8	35-4/5	11-1/2										
SC-508-10-PS8	RC-508-10-PS8	36-3/10	12-1/4										
SC-509-10-PS8	RC-509-10-PS8	36-1/2	12-1/2										
2500	PHENOLIC	SC-507-10-PR	RC-507-10-PR	19-7/10	11-1/2								
		SC-508-10-PR	RC-508-10-PR	20-1/5	12-1/4								
		SC-509-10-PR	RC-509-10-PR	20-2/5	12-1/2								
		3300	CAST IRON	SC-507-10-CI	RC-507-10-CI	33-1/5	11-1/2						
				SC-508-10-CI	RC-508-10-CI	33-7/10	12-1/4						
				SC-509-10-CI	RC-509-10-CI	33-9/10	12-1/2						
10	3			1000	MOLD-ON RUBBER	ROLLER	SC-557-10-RS	RC-557-10-RS	34	11-1/2			
							SC-558-10-RS	RC-558-10-RS	34-1/2	12-1/4			
							SC-559-10-RS	RC-559-10-RS	34-7/10	12-1/2			
		SC-557-10-PS8	RC-557-10-PS8				36-1/2	11-1/2					
		SC-558-10-PS8	RC-558-10-PS8				37	12-1/4					
		SC-559-10-PS8	RC-559-10-PS8				37-1/5	12-1/2					
		2400	SOFT POLY / CAST IRON HUB	SC-557-10-PS	RC-557-10-PS		36-1/2	11-1/2					
				SC-558-10-PS	RC-558-10-PS		37	12-1/4					
				SC-559-10-PS	RC-559-10-PS		37-1/5	12-1/2					
				2600	POLYURETHANE / CAST IRON HUB		SC-557-10-PR	RC-557-10-PR	20-2/5	11-1/2			
							SC-558-10-PR	RC-558-10-PR	20-9/10	12-1/4			
							SC-559-10-PR	RC-559-10-PR	21-1/10	12-1/2			
2900	PHENOLIC	SC-557-10-CI	RC-557-10-CI			33-9/10	11-1/2						
		SC-558-10-CI	RC-558-10-CI			34-2/5	12-1/4						
		SC-559-10-CI	RC-559-10-CI			34-3/5	12-1/2						
		3400	CAST IRON	SC-557-10-PS	RC-557-10-PS	36-1/2	11-1/2						
				SC-558-10-PS	RC-558-10-PS	37	12-1/4						
				SC-559-10-PS	RC-559-10-PS	37-1/5	12-1/2						
SC-557-10-PR	RC-557-10-PR			20-2/5	11-1/2								
SC-558-10-PR	RC-558-10-PR			20-9/10	12-1/4								
SC-559-10-PR	RC-559-10-PR			21-1/10	12-1/2								